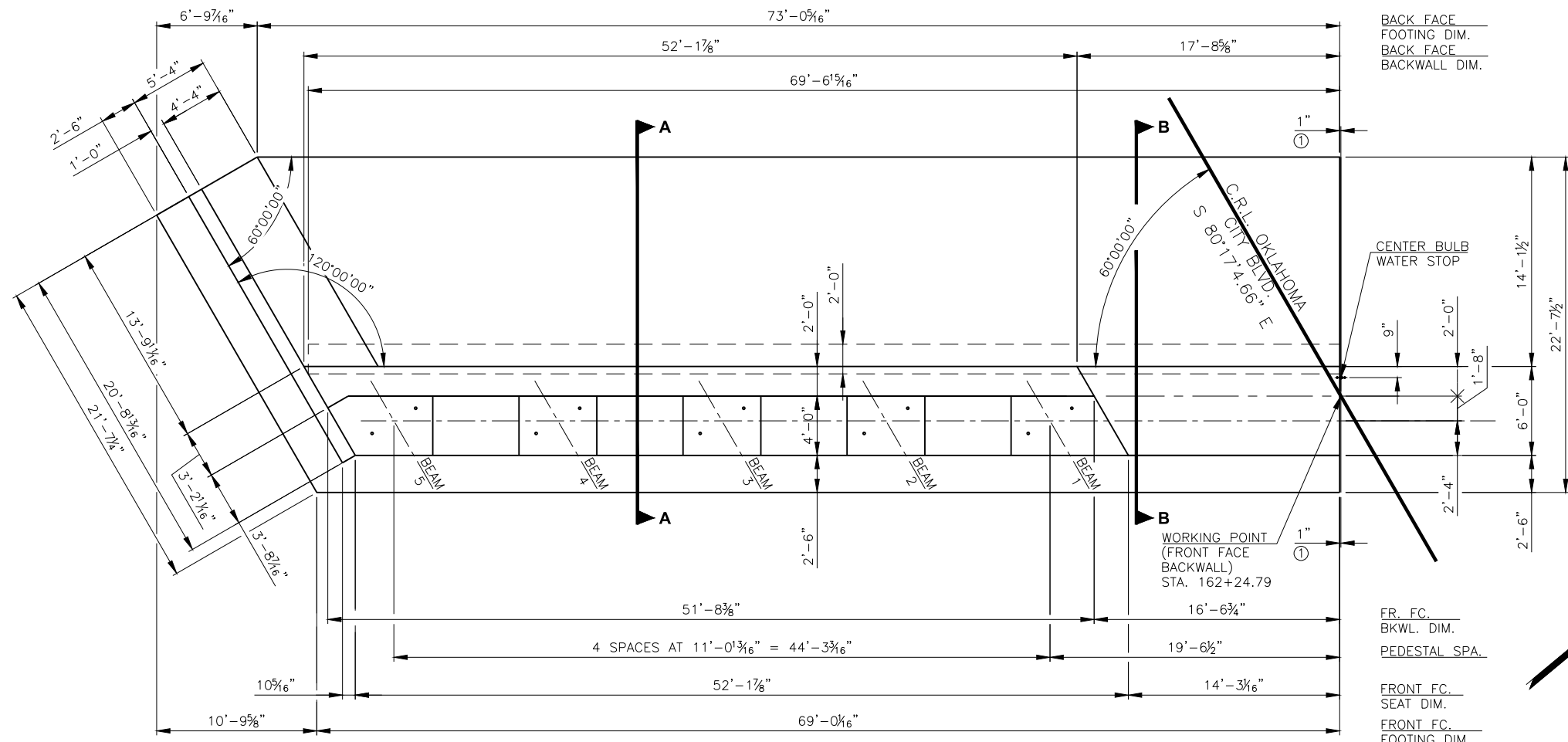


DESCRIPTION	REVISIONS	DATE



PLAN

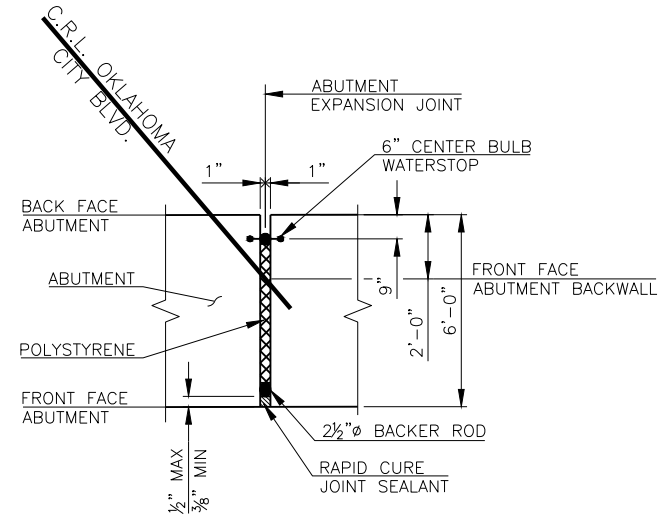
① 2" NOMINAL JOINT BETWEEN ADJACENT ABUTMENTS. SEE THIS SHEET FOR DETAILS.

NOTES:
ALL COST TO PROVIDE AND INSTALL CENTERBULB WATERSTOP INCLUDED IN OTHER ITEMS OF WORK.

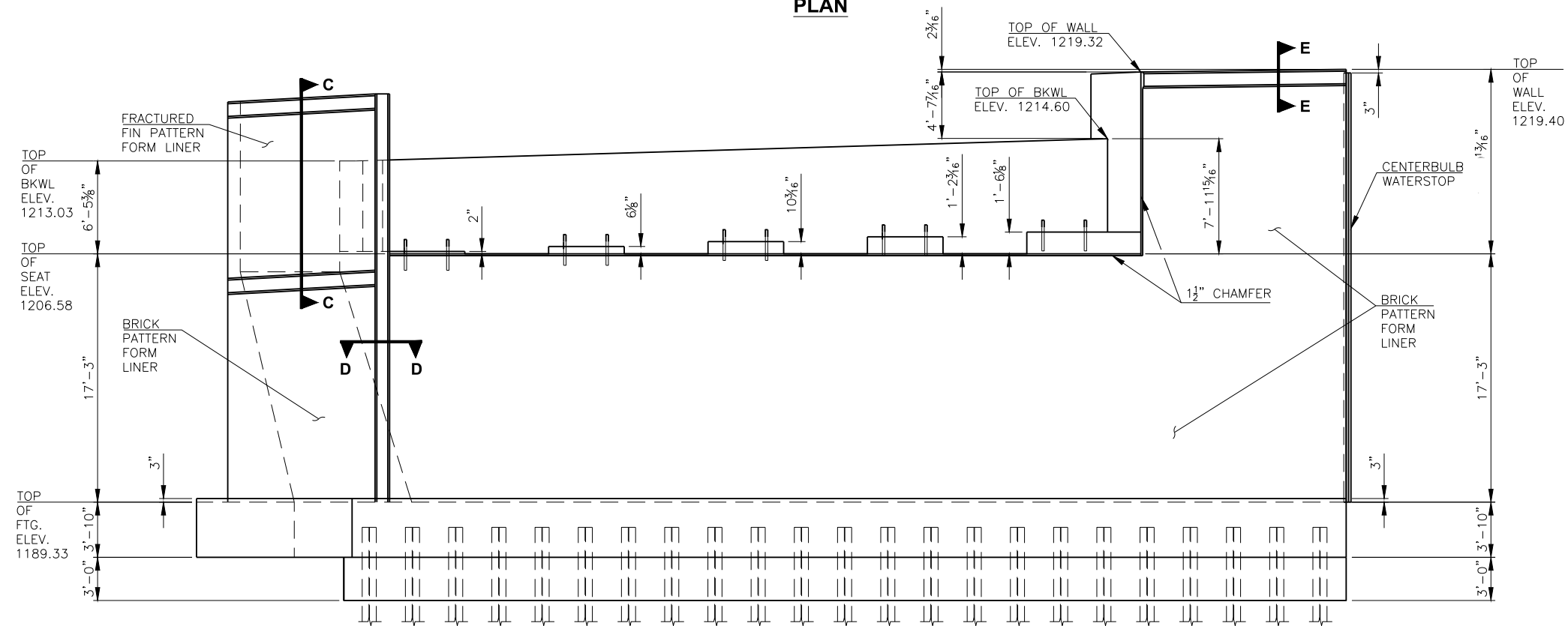
FOR SECTIONS A-A THROUGH E-E, SEE SHEET 84.

FOR FORM LINER DETAILS AND SPECIAL CONCRETE FINISH NOTES, SEE SHEETS 137-139.

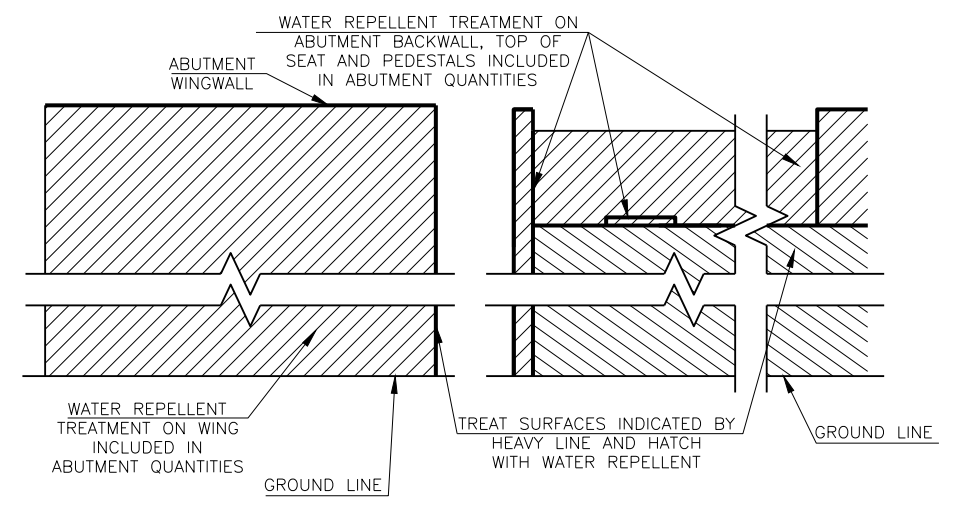
NOTE:
INSTALL BACKER ROD AND RAPID CURE JOINT SEALANT BETWEEN BRIDGE ABUTMENTS IN THE FRONT VERTICAL AND TOP HORIZONTAL EDGES OF THE JOINT. ALL COST OF CENTER BULB WATER STOP, POLYSTYRENE, BACKER ROD, AND RAPID CURE JOINT SEALANT, INCLUDING LABOR, MATERIALS, AND INCIDENTALS NECESSARY TO DO THE WORK, SHALL BE INCLUDED IN OTHER ITEMS OF WORK.



ABUTMENT JOINT DETAIL



ELEVATION



WING ELEVATION SEAT ELEVATION

ABUTMENT

WATER REPELLENT TREATMENT DETAILS

DESIGN	T.A.C.	OKLAHOMA CITY BLVD.	OKLAHOMA COUNTY
DRAWN	R.A.P.	OVER CLASSEN BLVD.	BRIDGE A
CHECKED	T.A.C.	ABUTMENT NO. 1 - PLAN AND ELEVATION	
APPROV.	T.A.C.		
SQUAD	CEC		
		JOB PIECE NO. 17428(88)	SHEET NO. 81